

TRUMP

INTERNATIONAL REALTY



LUXURY LISTING BOOK



“We understand the importance and complexity of real estate and will ensure that each transaction will be treated as if it were one of our own.”

Eric Trump

THE WORLD'S ONLY GLOBAL LUXURY REAL ESTATE SUPER-BRAND

Trump International Realty is the premier luxury full service brokerage with real estate professionals servicing major markets such as New York, New Jersey, Florida, North Carolina and Nevada as well as the entire Trump worldwide portfolio. Leveraging its global brand recognition, real estate vision and tremendous resources, Trump International Realty delivers a level of distinctive services unparalleled in the industry. By adhering to the Trump Organization's standards of best-in-class talent, white glove service, superior quality, attention to detail and innovation, Trump International Realty demonstrates a clear competitive advantage in marketing and selling luxury properties.





PROPERTY FEATURE | 240 RIVERSIDE BOULEVARD PH SUITE 2

3 Bedrooms | 4 Bathrooms | 4,950 Sq. Ft. | Presented at: \$18,750,000





PH Suite 2

Welcome home to this exquisite full-floor penthouse with sweeping panoramic views of the Hudson River and Riverside Park from every room. Step off your private elevator and enter the grand foyer leading you to this three bedroom, four full bath condominium with three wood burning fireplaces and 480 square feet of outdoor loggia terraces. Entertain your guests in the grand living and dining room or out on the terrace overlooking the Hudson River with spectacular views day and night. This home is for the buyer who loves to entertain yet enjoy the peace and tranquility of a serene and contemporary urban retreat.

**EXCLUSIVELY REPRESENTED
BY: PATRICIA HEALY**
LICENSED RE SALESPERSON
914.924.2828
phealy@trumpintlrealty.com





33D

1 CENTRAL PARK WEST

3 BEDROOM
3/1 BATHROOM
2,165 APPROX. SQ. FT.

OFFERED AT: \$6,990,000

SUSAN JAMES
LICENSED ASSOCIATE BROKER
212.299.1105
sjames@trumporg.com

12E

502 PARK AVENUE

1 BEDROOM
1 BATHROOM
817 APPROX. SQ. FT.

OFFERED AT: \$1,795,000

MICHAEL WEINER
LICENSED RE SALESPERSON
917.686.7899
mweiner@trumpintlrealty.com

NITZA SHAFRIR ZINBARG
LICENSED ASSOCIATE BROKER
646.942.5521
nzinbarg@trumpintlrealty.com



64E

845 UNITED NATIONS PLAZA

2 BEDROOM
3/1 BATHROOM
1,875 APPROX. SQ. FT.

OFFERED AT: \$3,495,000

PATRICIA HEALY
LICENSED RE SALESPERSON
914.924.2828
phealy@trumpintlrealty.com

8H

502 PARK AVENUE

1 BEDROOM
1 BATHROOM
680 APPROX. SQ. FT.

OFFERED AT: \$1,595,000

MICHAEL WEINER
LICENSED RE SALESPERSON
917.686.7899
mweiner@trumpintlrealty.com

NITZA SHAFRIR ZINBARG
LICENSED ASSOCIATE BROKER
646.942.5521
nzinbarg@trumpintlrealty.com





15F

502 PARK AVENUE

1 BEDROOM
1 BATHROOM
800 APPROX. SQ. FT.

OFFERED AT: \$1,730,000

NITZA SHAFRIR ZINBARG
LICENSED ASSOCIATE BROKER
646.942.5521
nzinbarg@trumpintlrealty.com



23I

106 CENTRAL PARK SOUTH

1 BEDROOM
1/1 BATHROOM
1,063 APPROX. SQ. FT.

OFFERED AT: \$1,749,000

MICHAEL WEINER
LICENSED RE SALESPERSON
917.686.7899
mweiner@trumpintlrealty.com



7C

1441 THIRD AVENUE

2 BEDROOM
2 BATHROOM
1,287 APPROX. SQ. FT.

OFFERED AT: \$1,700,000

NITZA SHAFRIR ZINBARG
LICENSED ASSOCIATE BROKER
646.942.5521
nzinbarg@trumpintlrealty.com



25B

106 CENTRAL PARK SOUTH

2 BEDROOM
2/1 BATHROOM
1,431 APPROX. SQ. FT.

OFFERED AT: \$3,300,000

MICHAEL WEINER
LICENSED RE SALESPERSON
917.686.7899
mweiner@trumpintlrealty.com



7E
106 CENTRAL PARK SOUTH

STUDIO
1 BATHROOM
406 APPROX. SQ. FT.

OFFERED AT: \$600,000

MICHAEL WEINER
LICENSED RE SALESPERSON
917.686.7899
mweiner@trumpintlrealty.com

1718
1 CENTRAL PARK WEST

1 BEDROOM
1 BATHROOM
691 APPROX. SQ. FT.

OFFERED AT: \$1,295,000

SUSAN JAMES
LICENSED ASSOCIATE BROKER
212.299.1105
sjames@trumporg.com



12B
360 EAST 88TH STREET

1 BEDROOM
1/1 BATHROOM
750 APPROX. SQ. FT.

OFFERED AT: \$825,000

NITZA SHAFRIR ZINBARG
LICENSED ASSOCIATE BROKER
646.942.5521
nzinbarg@trumpintlrealty.com

618
1 CENTRAL PARK WEST

1 BEDROOM
1 BATHROOM
691 APPROX. SQ. FT.

OFFERED AT: \$995,000

SUSAN JAMES
LICENSED ASSOCIATE BROKER
212.299.1105
sjames@trumporg.com





7A

502 PARK AVENUE

3 BEDROOM
3/1 BATHROOM
2,354 APPROX. SQ. FT.

OFFERED AT: \$16,000/mo

MICHAEL WEINER
LICENSED RE SALESPERSON
917.686.7899
mweiner@trumpintlrealty.com

NITZA SHAFRIR ZINBARG
LICENSED ASSOCIATE BROKER
646.942.5521
nzinbarg@trumpintlrealty.com



35A

106 CENTRAL PARK SOUTH

3 BEDROOM
3/1 BATHROOM
1,906 APPROX. SQ. FT.

OFFERED AT: \$14,000/mo

MICHAEL WEINER
LICENSED RE SALESPERSON
917.686.7899
mweiner@trumpintlrealty.com



23E

845 UNITED NATIONS PLAZA

2 BEDROOM
2/1 BATHROOM
1,582 APPROX. SQ. FT.

OFFERED AT: \$8,000/mo

ETIENNE LAFAYE
LICENSED RE SALESPERSON
917.880.1742
elafaye@trumpintlrealty.com

5D

550 WEST 29TH STREET

3 BEDROOM
3 BATHROOM
1,859 APPROX. SQ. FT.

OFFERED AT: \$11,950/mo

NITZA SHAFRIR ZINBARG
LICENSED ASSOCIATE BROKER
646.942.5521
nzinbarg@trumpintlrealty.com





2H
106 CENTRAL PARK SOUTH

1 BEDROOM
2 BATHROOM
928 APPROX. SQ. FT.

OFFERED AT: \$4,500/mo

MICHAEL WEINER
LICENSED RE SALESPERSON
917.686.7899
mweiner@trumpintlrealty.com



9H
845 UNITED NATIONS PLAZA

1 BEDROOM
2 BATHROOM
1,300 APPROX. SQ. FT.

OFFERED AT: \$7,200/mo

PATRICIA HEALY
LICENSED RE SALESPERSON
914.924.2828
phealy@trumpintlrealty.com



9J
502 PARK AVENUE

2 BEDROOM
2 BATHROOM
1,322 APPROX. SQ. FT.

OFFERED AT: \$11,000/mo

NITZA SHAFRIR ZINBARG
LICENSED ASSOCIATE BROKER
646.942.5521
nzinbarg@trumpintlrealty.com



75A
845 UNITED NATIONS PLAZA

3 BEDROOM
3 BATHROOM
2,476 APPROX. SQ. FT.

OFFERED AT: \$20,000/mo

ETIENNE LAFAYE
LICENSED RE SALESPERSON
917.880.1742
elafaye@trumpintlrealty.com



3G

106 CENTRAL PARK SOUTH

STUDIO
1 BATHROOM
553 APPROX. SQ. FT.

OFFERED AT: \$699,000 | \$2,500

MICHAEL WEINER
LICENSED RE SALESPERSON
917.686.7899
mweiner@trumpintlrealty.com

6C

845 UNITED NATIONS PLAZA

1 BEDROOM
1/1 BATHROOM
877 APPROX. SQ. FT.

OFFERED AT: \$5,200/mo

PATRICIA HEALY
LICENSED RE SALESPERSON
914.924.2828
phealy@trumpintlrealty.com



7A

360 EAST 88TH STREET

STUDIO
1 BATHROOM
550 APPROX. SQ. FT.

OFFERED AT: \$650,000 | \$2,700

NITZA SHAFRIR ZINBARG
LICENSED ASSOCIATE BROKER
646.942.5521
nzinbarg@trumpintlrealty.com





Grand Marble Lobby

Trump World Tower, renowned for its 70 story glass curtain wall facade, stands as one of the finest residential buildings in New York City. Featuring awe-inspiring views of the East River and the United Nations Headquarters, state-of-the-art amenities and superior white-glove service, the tower embodies a life of incomparable luxury. Its exquisite two-story marble lobby and porte-cochere entryway combined with some of New York City's most famous dining and shopping establishments, offer Trump World Tower residents an artistic array of home, communal, cultural and social amenities.

BUILDING SPECIALIST
PATRICIA HEALY
LICENSED RE SALESPERSON
914.924.2828
phealy@trumpintlrealty.com

BUILDING SPECIALIST
ETIENNE LAFAYE
LICENSED RE SALESPERSON
917.880.1742
elafaye@trumpintlrealty.com



60 Ft Pool



Spa

AMENITIES



Health Club



Children's Playroom



Dog Park

AMENITIES



Outdoor Terrace



UN Plaza Grill



World Bar



PROPERTY FEATURE | RICKS MOUNTAIN HOLBERT COVE RD, SALUDA, NC
Approx. 1,285 Acres





Ricks Mountain

Ricks Mountain presents a unique opportunity to purchase undeveloped land with soaring views located in the Southwestern area of North Carolina near Asheville.

- Native Timber & Long Range Views
- Located in the Blue Ridge/Piedmont Escarpment
- Largest Contiguous Piece of Privately Owned Property in Polk County

**EXCLUSIVELY REPRESENTED
BY: JESSICA BABINGTON**
BROKER IN CHARGE, REALTOR®
704.658.8849
jbabington@trumpintlrealty.com





104 BROWNSTONE DRIVE
MOORESVILLE, NC

ESTATE LOT
2.75 APPROX. ACRES
1,200 FEET OF SHORELINE

OFFERED AT: \$2,250,000

MARY BRUIN
BROKER/REALTOR®
704.771.6332
mary.bruin@trumpintlrealty.com

TIM BRUIN
BROKER/REALTOR®
704.293.6486
timothy.bruin@trumpintlrealty.com

310 CAMINO REAL ROAD
MOORESVILLE, NC

4 BEDROOM
5/2 BATHROOM
4,837 APPROX. SQ. FT.

OFFERED AT: \$1,895,000

SCOTT JARVIS
BROKER/REALTOR®
704.754.2184
scott.jarvis@trumpintlrealty.com



155 VINEYARD DRIVE
MOORESVILLE, NC

4 BEDROOM
4/1 BATHROOM
5,055 APPROX. SQ. FT.

OFFERED AT: \$1,295,000

ELIZABETH MANION
BROKER, REALTOR®
704.506.8482
emanion@trumpintlrealty.com

108 ESSEX COURT
MOORESVILLE, NC

4 BEDROOM
4/1 BATHROOM
4,098 APPROX. SQ. FT.

OFFERED AT: \$634,999

MARY BRUIN
BROKER/REALTOR®
704.771.6332
mary.bruin@trumpintlrealty.com

TIM BRUIN
BROKER/REALTOR®
704.293.6486
timothy.bruin@trumpintlrealty.com





115 UNION CHAPEL DRIVE
MOORESVILLE, NC

5 BEDROOM
4/1 BATHROOM
5,288 APPROX. SQ. FT.

OFFERED AT: \$980,000

JESSICA BABINGTON
BROKER IN CHARGE, REALTOR®
704.658.8849
jbabington@trumpintlrealty.com

104 WOODS HOLE COURT
MOORESVILLE, NC

5 BEDROOM
5/1 BATHROOM
5,650 APPROX. SQ. FT.

OFFERED AT: \$1,812,500

MARY BRUIN
BROKER/REALTOR®
704.771.6332
mary.bruin@trumpintlrealty.com

TIM BRUIN
BROKER/REALTOR®
704.293.6486
timothy.bruin@trumpintlrealty.com



179 MILFORD CIRCLE
MOORESVILLE, NC

5 BEDROOM
5/4 BATHROOM
8,946 APPROX. SQ. FT.

OFFERED AT: \$3,500,000

JESSICA BABINGTON
BROKER IN CHARGE, REALTOR®
704.658.8849
jbabington@trumpintlrealty.com

106 LIGHTSHIP DRIVE
MOORESVILLE, NC

4 BEDROOM
5/2 BATHROOM
6,547 APPROX. SQ. FT.

OFFERED AT: \$1,056,000

JESSICA BABINGTON
BROKER IN CHARGE, REALTOR®
704.658.8849
jbabington@trumpintlrealty.com





180 ATLANTIC WAY
MOORESVILLE, NC

4 BEDROOM
5 BATHROOM
4,391 APPROX. SQ. FT.

OFFERED AT: \$875,000

JESSICA BABINGTON
BROKER IN CHARGE, REALTOR®
704.658.8849
jbabington@trumpintrealty.com

JODIE WIDASECK
MANAGING DIRECTOR, REALTOR®
704.677.8894
jwidaseck@trumporg.com



160 STONEWALL BEACH LANE
MOORESVILLE, NC

5 BEDROOM
6/1 BATHROOM
7,546 APPROX. SQ. FT.

OFFERED AT: \$2,099,000

MARY BRUIN
BROKER/REALTOR®
704.771.6332
mary.bruin@trumpintrealty.com

TIM BRUIN
BROKER/REALTOR®
704.293.6486
timothy.bruin@trumpintrealty.com

TRUMP NATIONAL GOLF CLUB CHARLOTTE
MOORESVILLE, NORTH CAROLINA





PROPERTY FEATURE | 425 RED HAWK DRIVE, JUPITER, FL

5 Bedrooms | 5/1 Bathrooms | 4,363 Sq. Ft. | Presented at: \$2,549,000





425 Red Hawk Drive

Luxury and elegance abounds in this completely renovated home offering fine detailing and finishes with a contemporary flair. Master suite with office on the first level allows for comfort and privacy. Top-of-the-line appliances compliment the chef's kitchen which easily flows into the dining and living room. Through the french doors to the back of the home you will experience lush, meticulously landscaped grounds providing privacy for intimate outdoor entertaining with a resort style pool with spa, summer kitchen and putting/chipping green. Separate one bedroom guest suite completes this gem.

**EXCLUSIVELY REPRESENTED
BY: HEIDI BRZYSKI**
MANAGING BROKER, REALTOR®
732.673.1752
hbrzyski@trumpintrealty.com



REGAL FEATURE | 1125 S OCEAN BOULEVARD, PALM BEACH, FL

8 Bedrooms | 8/3 Bathrooms | 8,269 Sq. Ft.





1125 S Ocean Blvd.

With over 200 sweeping feet of oceanfront property and a lush, landscaped yard, this magnificent 8 bedroom, 8,269 square foot estate is ideal for a seasonal vacation or a long-term rental. Residents can enjoy a dip in the expansive swimming pool facing the sea, bask in the sunlight on elegant lounge chairs or dine alfresco.

- Nestled in the most sought-after address in Palm Beach
- Offering direct access to the Mar-a-Lago Beach Club

**EXCLUSIVELY REPRESENTED
BY: HEIDI BRZYSKI**

MANAGING BROKER, REALTOR®
732.673.1752
hbrzyski@trumpintlrealty.com



REGAL FEATURE | 1094 S OCEAN BOULEVARD, PALM BEACH, FL
5 Bedrooms | 5/1 Bathrooms | 4,643 Sq. Ft.





1094 S Ocean Blvd.

This impeccable, fully furnished estate features fine detailing and finishes exuding warmth and elegance throughout. The lush landscaping provides privacy for intimate outdoor entertaining.

- Nestled in the most sought-after address in Palm Beach
- Adjacent to The Mar-a-Lago Club

**EXCLUSIVELY REPRESENTED
BY: HEIDI BRZYSKI**
MANAGING BROKER, REALTOR®
732.673.1752
hbrzyski@trumpintlrealty.com





1680 JAMES AVE.
MIAMI BEACH, FL

South Beach - Iconic Art Deco Hotel
47 Rooms

OFFERED AT: \$30,900,000

ROBERTO PECCHI
BROKER, REALTOR®
786.564.2318
rpecchi@trumpintlrealty.com

527 BALD EAGLE DRIVE
JUPITER, FL

5 BEDROOM
5/2 BATHROOM
5,448 APPROX. SQ. FT.

OFFERED AT: \$2,599,000

HEIDI BRZYSKI
MANAGING BROKER
732.673.1752
hbrzyski@trumpintlrealty.com



20 PELICAN STREET WEST
NAPLES, FL

LOT
0.50 APPROX. ACRES

OFFERED AT: \$3,275,000

CRAIG WOLF
LUXURY REAL ESTATE SPECIALIST
239.850.3172
cwolf@trumpintlrealty.com

1081 HARBOR COURT
HOLLYWOOD, FL

4 BEDROOM
4/1 BATHROOM
3,932 APPROX. SQ. FT.

OFFERED AT: \$2,498,000

YASMELIN TORRES
REALTOR®
305.401.1553
ytorres@trumpintlrealty.com





22 PELICAN STREET WEST
NAPLES, FL

LOT
0.27 APPROX. ACRES

OFFERED AT: \$1,650,000

CRAIG WOLF
LUXURY REAL ESTATE SPECIALIST
239.850.3172
cwolf@trumpintlrealty.com

424 RED HAWK DRIVE
JUPITER, FL

4 BEDROOM
4/1 BATHROOM
3,936 APPROX. SQ. FT.

OFFERED AT: \$2,199,000

HEIDI BRZYSKI
MANAGING BROKER
732.673.1752
hbrzyski@trumpintlrealty.com



14 PELICAN STREET WEST
NAPLES, FL

LOT
0.25 APPROX. ACRES

OFFERED AT: \$1,625,000

CRAIG WOLF
LUXURY REAL ESTATE SPECIALIST
239.850.3172
cwolf@trumpintlrealty.com

148 KEY LANE
JUPITER, FL

3 BEDROOM
2/1 BATHROOM
2,157 APPROX. SQ. FT.

OFFERED AT: \$899,000

HEIDI BRZYSKI
MANAGING BROKER
732.673.1752
hbrzyski@trumpintlrealty.com





2899 COLLINS AVE. PHG
MIAMI BEACH, FL

1 BEDROOM
1/1 BATHROOM
1,102 APPROX. SQ. FT.

OFFERED AT: \$750,000

MARY ANN SHOCKLEY
LUXURY RE SPECIALIST, REALTOR®
305.338.8378
mshockley@trumpintlrealty.com

19 WINDWARD ISLE
PALM BEACH GARDENS, FL

5 BEDROOM
4 BATHROOM
4,057 APPROX. SQ. FT.

OFFERED AT: \$810,000

HEIDI BRZYSKI
MANAGING BROKER
732.673.1752
hbrzyski@trumpintlrealty.com



1155 BRICKELL BAY DR.
MIAMI, FL

2 BEDROOM
2 BATHROOM
1,200 APPROX. SQ. FT.

OFFERED AT: \$495,000

YASMELIN TORRES
REALTOR®
305.401.1553
ytorres@trumpintlrealty.com

5300 NW 85TH AVE.
DORAL, FL

1 BEDROOM
1 BATHROOM
829 APPROX. SQ. FT.

OFFERED AT: \$320,000

YASMELIN TORRES
REALTOR®
305.401.1553
ytorres@trumpintlrealty.com





7865 NW 104TH AVE.
DORAL, FL

2 BEDROOM
2/1 BATHROOM
1,088 APPROX. SQ. FT.

OFFERED AT: \$310,000

YASMELIN TORRES
REALTOR®
305.401.1553
ytorres@trumpintlrealty.com



9333 NW 50TH DORAL CIR
DORAL, FL

3 BEDROOM
2/1 BATHROOM
2,037 APPROX. SQ. FT.

OFFERED AT: \$4,000/mo

MARY ANN SHOCKLEY
LUXURY RE SPECIALIST, REALTOR®
305.338.8378
mshockley@trumpintlrealty.com



At Trump International Realty we connect the world's
most selective buyers and sellers with the finest properties
available on the luxury home market today.



Our commitment is to provide
you with the ultimate level of
service and expertise



We will represent you in the
most professional manner

At Trump International Realty we are committed to providing our clients the highest level of luxury service along with the best marketing resources and support. Our world-renowned brand, combined with our team’s unparalleled breadth of experience and meticulous approach to strategic pricing and marketing, provides the properties we represent with the ultimate exposure to the most discerning buyers and sellers. Our continued success will serve to reflect our firm’s long and proven track record of luxury sales.

NEW YORK



JODIE WIDASECK
MANAGING DIRECTOR
704.677.8834
jwidaseck@trumporg.com



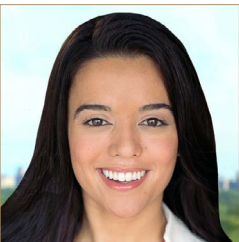
PATRICIA HEALY
LICENSED RE SALESPERSON
914.924.2828
phealy@trumpintlrealty.com



SUSAN JAMES
LICENSED ASSOCIATE BROKER
212.299.1105
sjames@trumporg.com



ETIENNE LAFAYE
LICENSED RE SALESPERSON
917.880.1742
elafaye@trumpintlrealty.com



JESSICA DOOLITTLE
LICENSED RE SALESPERSON
646.450.6571
jdoolittle@trumpintlrealty.com



MICHAEL WEINER
LICENSED RE SALESPERSON
917.686.7899
mweiner@trumpintlrealty.com



NITZA SHAFIR ZINBARG
LICENSED ASSOCIATE RE BROKER
917.400.5044
nzinbarg@trumpintlrealty.com



EDWARD ZAZZALI
LICENSED RE SALESPERSON
973.303.2052
ezazzali@trumpintlrealty.com



RAFAEL SACCENTE
LICENSED ASSOCIATE BROKER
917.623.8570
rsaccente@trumpintlrealty.com



ANNE WOLF
LICENSED RE SALESPERSON
914.522.3176
awolf@trumpintlrealty.com

NORTH CAROLINA



JESSICA BABINGTON
BROKER IN CHARGE, REALTOR®
704.658.8849
jbabington@trumpintrealty.com



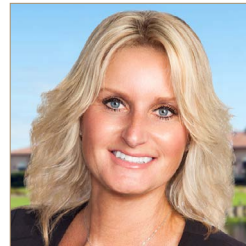
CHRIS SAUERBREY
BROKER, REALTOR®
704.798.1886
csauerbrey@trumpintrealty.com



ELIZABETH MANION
BROKER, REALTOR®
704.506.8482
emanion@trumpintrealty.com



ROSEANN ZINN
BROKER, REALTOR®
704.502.4397
rzinn@trumpintrealty.com



HEIDI BRZYSKI
MANAGING BROKER
732.673.1752
hbrzyski@trumpintrealty.com



MARY ANN SHOCKLEY
LUXURY RE SPECIALIST
305.338.8378
mshockley@trumpintrealty.com



YASMELIN TORRES
REALTOR®
305.401.1553
ytorres@trumpintrealty.com



REBECCA WILK
REALTOR®
954.258.5151
rwilk@trumpintrealty.com



JODIE WIDASECK
MANAGING DIRECTOR
704.677.8834
jwidaseck@trumporg.com



TIM BRUIN
BROKER, REALTOR®
704.293.6486
timothy.bruin@trumpintrealty.com



MARY BRUIN
BROKER, REALTOR®
704.771.6332
mary.bruin@trumpintrealty.com



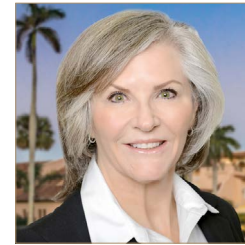
SCOTT JARVIS
BROKER, REALTOR®
704.754.2184
scott.jarvis@trumpintrealty.com



KRYSTAL FARINAS
REALTOR®
305.206.2646
kfarinas@trumpintrealty.com



ROBERTO PECCHI
BROKER, REALTOR®
786.564.2318
rpecchi@trumpintrealty.com



BARBARA RODGERS
REALTOR®
610.563.4776
brodgers@trumpintrealty.com



CRAIG WOLF
LUXURY RE SPECIALIST
239.850.3172
cwolf@trumpintrealty.com

NEW JERSEY



EDWARD ZAZZALI
LICENSED RE SALESPERSON
973.303.2052
ezazzali@trumpintrealty.com



HEIDI BRZYSKI
BROKER OF RECORD
732.673.1752
hbrzyski@trumpintrealty.com



GINA BELLO
REALTOR®
917.763.4789
gina.bello@trumpintrealty.com



JUSTIN ZELIKOFF
REALTOR®
904.403.4343
jzelikoff@trumpintrealty.com



TRACEY SERVIDEO
REALTOR®
561.512.0565
tracy.servideo@trumpintrealty.com

WESTCHESTER



EMMA FRANK
LICENSED ASSOCIATE RE BROKER
914.645.3120
efrank@trumpintrealty.com



HEIDI HENSHAW
LICENSED RE SALESPERSON
914.224.1493
hhenshaw@trumpintrealty.com



NICOLE MILNER-BREEN
VP & BROKER
702.321.1212
nmbreen@trumplv.com

FLORIDA

LAS VEGAS



NEW YORK, NY

725 FIFTH AVENUE, 16TH FLOOR
NEW YORK,
NEW YORK 10022
212.247.7100



MIAMI, FL

4400 NW 87TH AVENUE
DORAL,
FLORIDA 33178
305.392.4945



CHARLOTTE, NC

120 TRUMP SQUARE
MOORESVILLE,
NORTH CAROLINA 28117
704.799.0700



COLTS NECK, NJ

ONE TRUMP NATIONAL BOULEVARD,
COLTS NECK,
NEW JERSEY, 07722
212.247.7100



JUPITER, FL

ONE TRUMP NATIONAL BOULEVARD
JUPITER,
FLORIDA 33477
561.691.8710



WESTCHESTER, NY

100 SHADOW TREE LANE
BRIARCLIFF MANOR,
NEW YORK 10510
914.373.6290



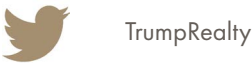
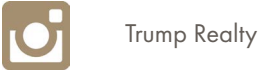
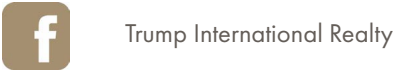
NAPLES, FL

780 5TH AVENUE SOUTH, STE.119
NAPLES,
FLORIDA 34102
561.691.8710



LAS VEGAS, NV

2000 FASHION SHOW DRIVE
LAS VEGAS,
NEVADA 89109
877.878.6711



TrumpInternationalRealty.com

VOLUME V

TRUMP

INTERNATIONAL REALTY



Trump International Realty is a Licensed Real Estate Broker. All information is from sources deemed reliable but subject to errors, omission, change of price, rental, prior sale, lease or financing, or withdrawal without notice. All measurements and other information are approximate and should be verified by your own attorney, architect or other professional. If your property is currently listed with another real estate broker, please disregard this offer. This is not intended to solicit property already listed. © 2020 Trump International Realty